



EL - Envelope Loft

Programming,
Design,
Specifications,
Computer modeling (Revit 2010),
Rendering (Cinema4D R12),

By: Tomas Aguilar

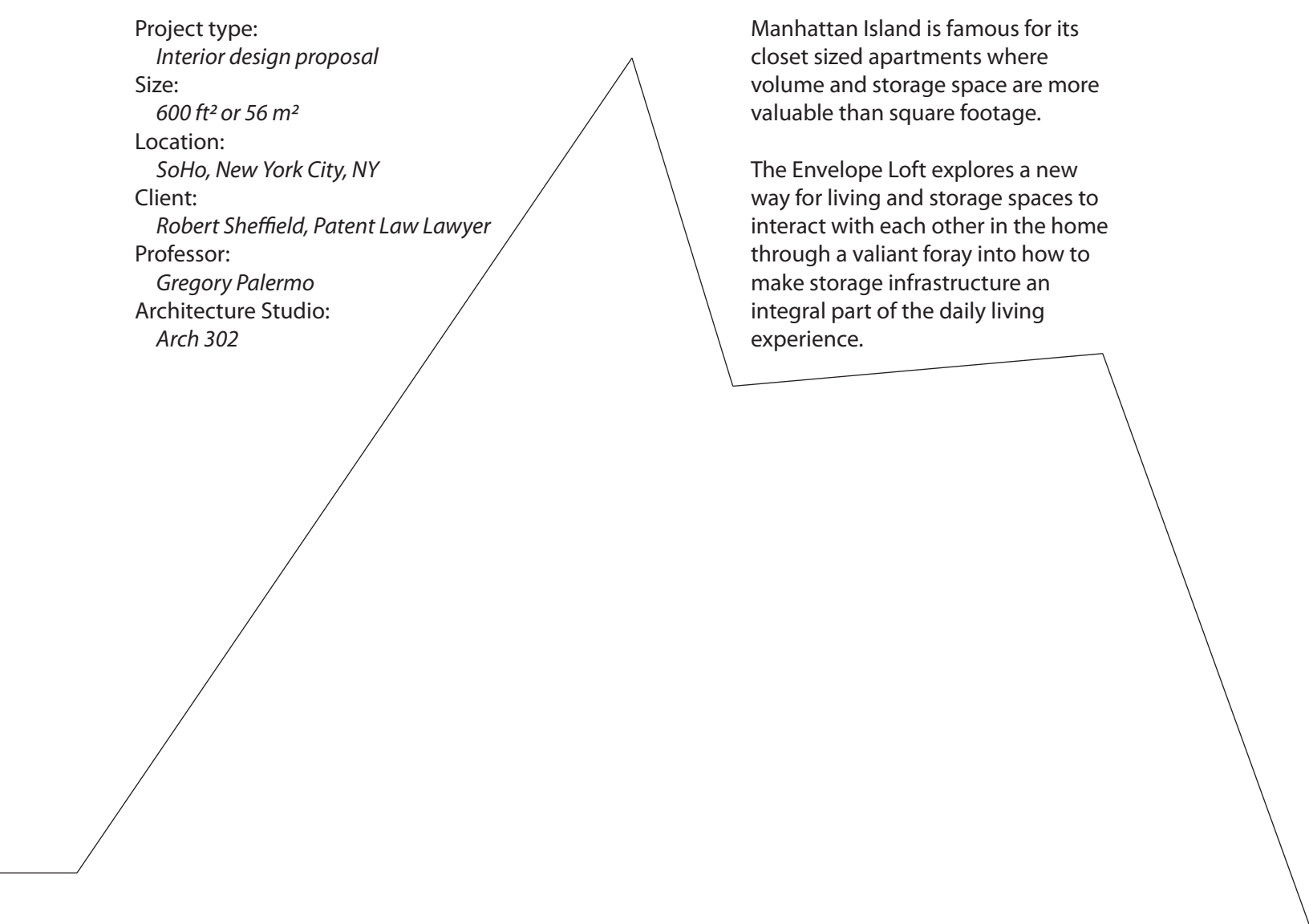
Corbusier Sofa
Wassily Chairs
RevitCity.com

Entourage and Miscellaneous Junk
Cinema4D

White Marble Texture
CGTextures.com

Hanging Bin Product Images
(<http://www.racorinc.com/Products.aspx?id=150&AspxAutoDetectCookieSupport=1>)

NYC Skyline Image
(<http://chriskart44.wordpress.com/2008/10/08/>)



Project type:
Interior design proposal

Size:
600 ft² or 56 m²

Location:
SoHo, New York City, NY

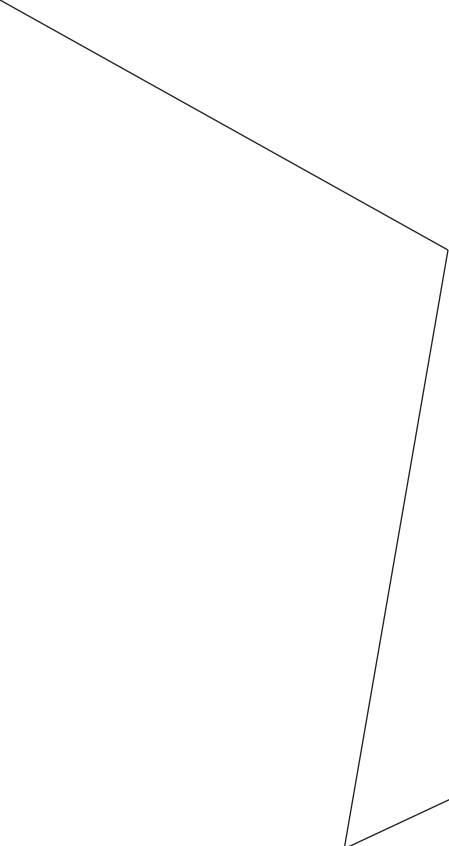
Client:
Robert Sheffield, Patent Law Lawyer

Professor:
Gregory Palermo

Architecture Studio:
Arch 302

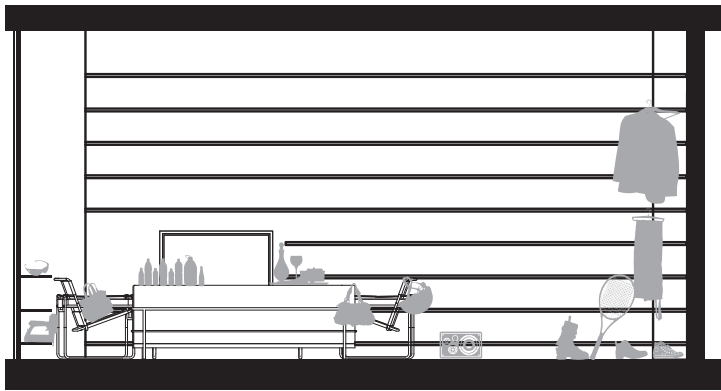
Manhattan Island is famous for its closet sized apartments where volume and storage space are more valuable than square footage.

The Envelope Loft explores a new way for living and storage spaces to interact with each other in the home through a valiant foray into how to make storage infrastructure an integral part of the daily living experience.

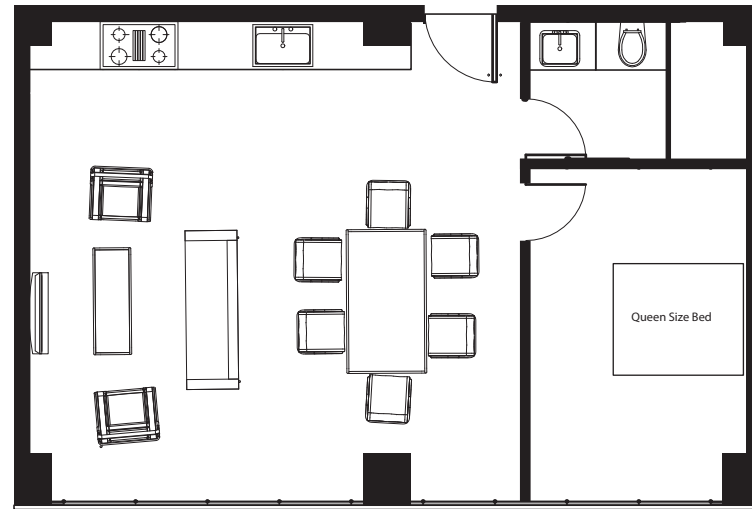


A typical design for this 600 square foot apartment would separate the bedroom and bathroom with walls. Since bedrooms are required to have one exterior window this forces the bedroom to block off a portion of the daylight for the apartment and also makes the public space of the apartment much smaller. But worst of all, the junk usually ends up on the floor, counters, tables, or in bulky and heavy furniture!

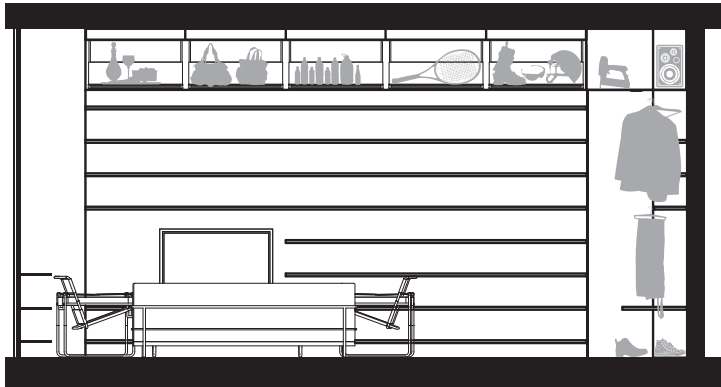
Instead of using walls to divide space the Envelope Loft uses time. This idea in combination with an envelope of storage that surrounds the living space are the two core concepts of this project. Closets that are three feet deep and hanging storage bins that pull down from the ceiling create an ample amount of storage space that is versatile and easily accessible throughout the apartment. Best of all, most of the junk is hidden above where it is out of the way and no one will even think to look for it!



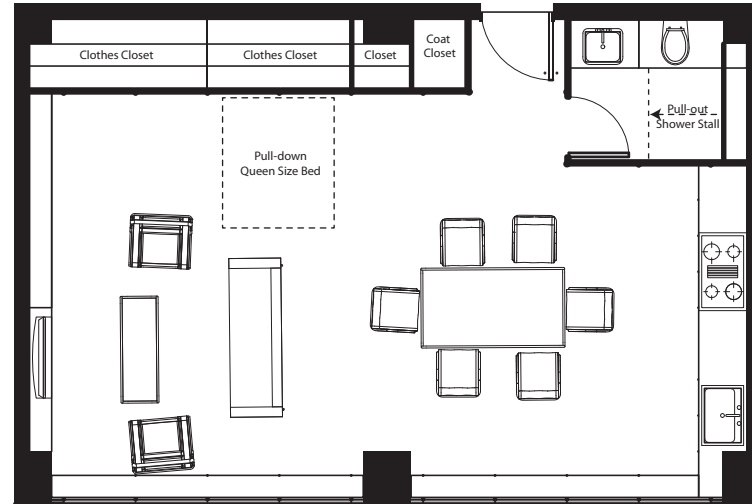
JUNK EVERYWHERE



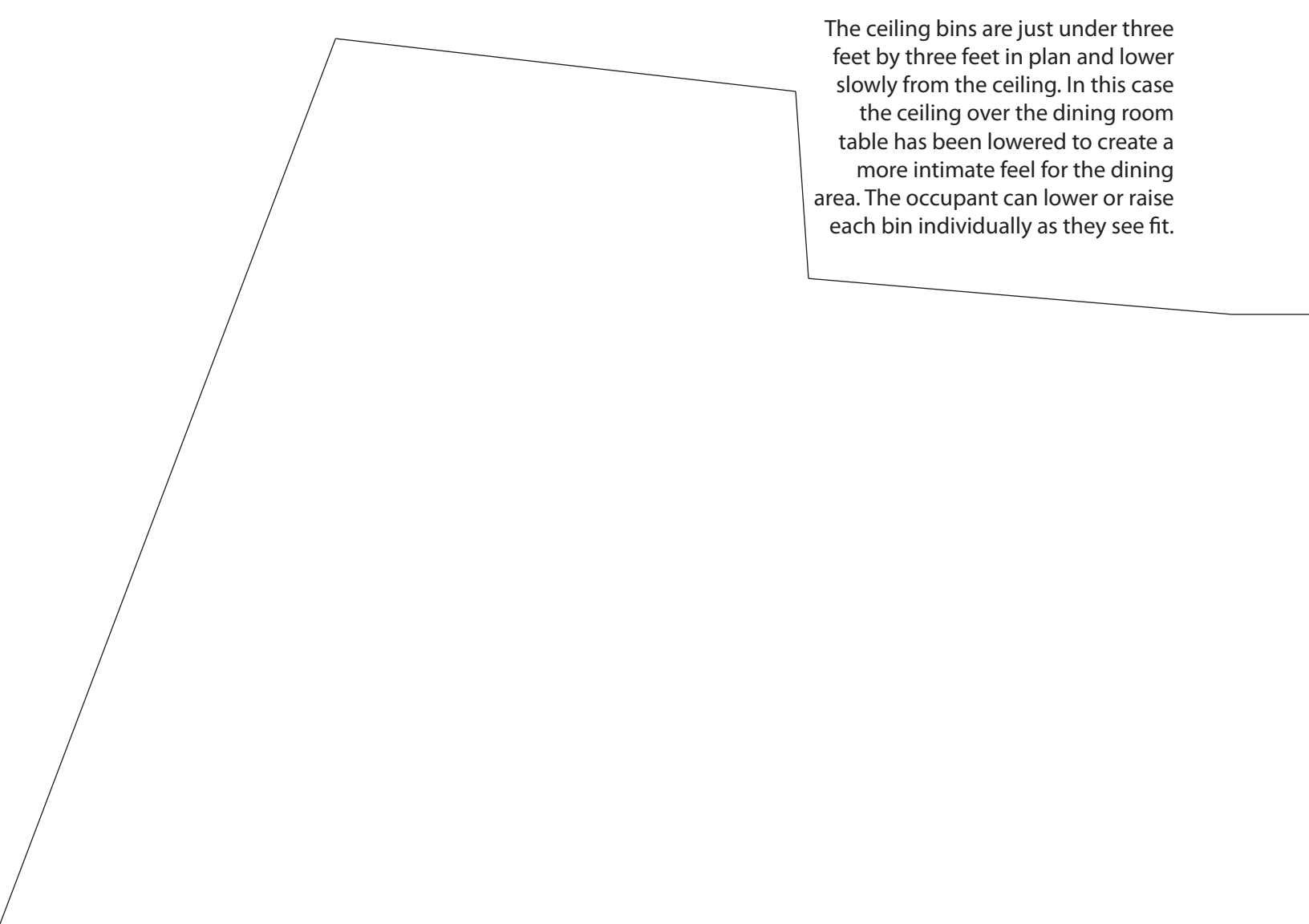
DIVIDED AND SMALL



JUNK IN THE ENVELOPE

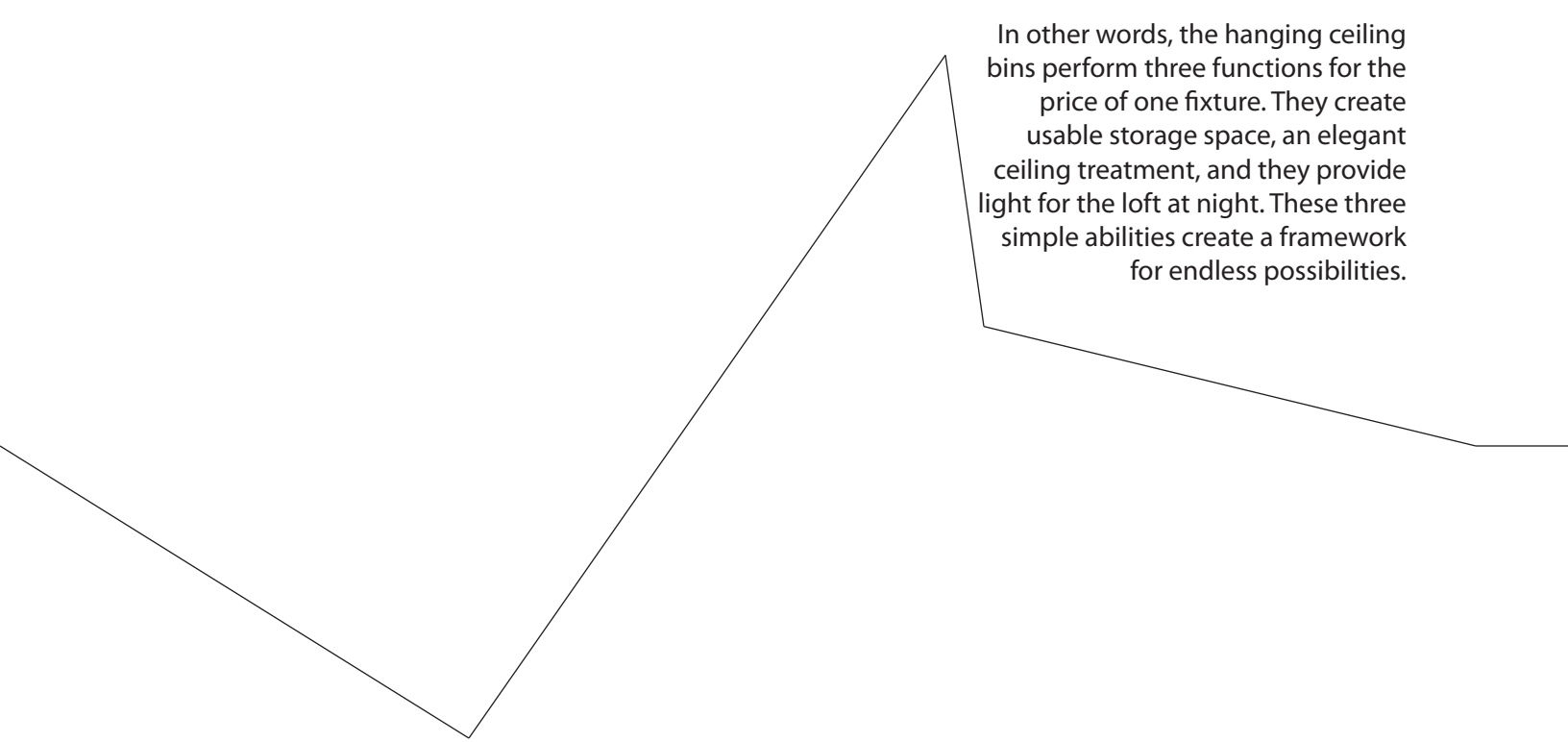


OPEN AND EXPANSIVE

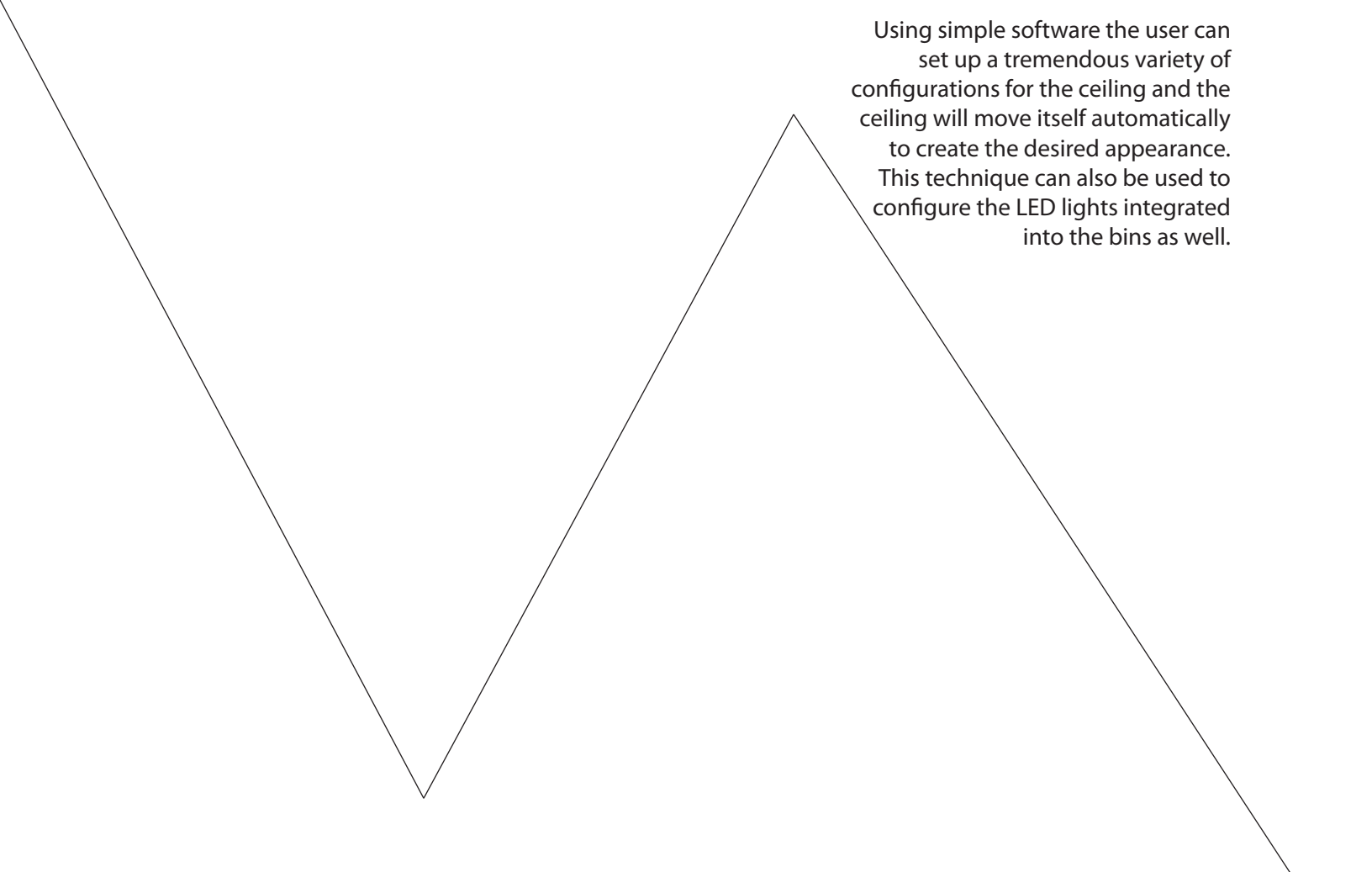


The ceiling bins are just under three feet by three feet in plan and lower slowly from the ceiling. In this case the ceiling over the dining room table has been lowered to create a more intimate feel for the dining area. The occupant can lower or raise each bin individually as they see fit.



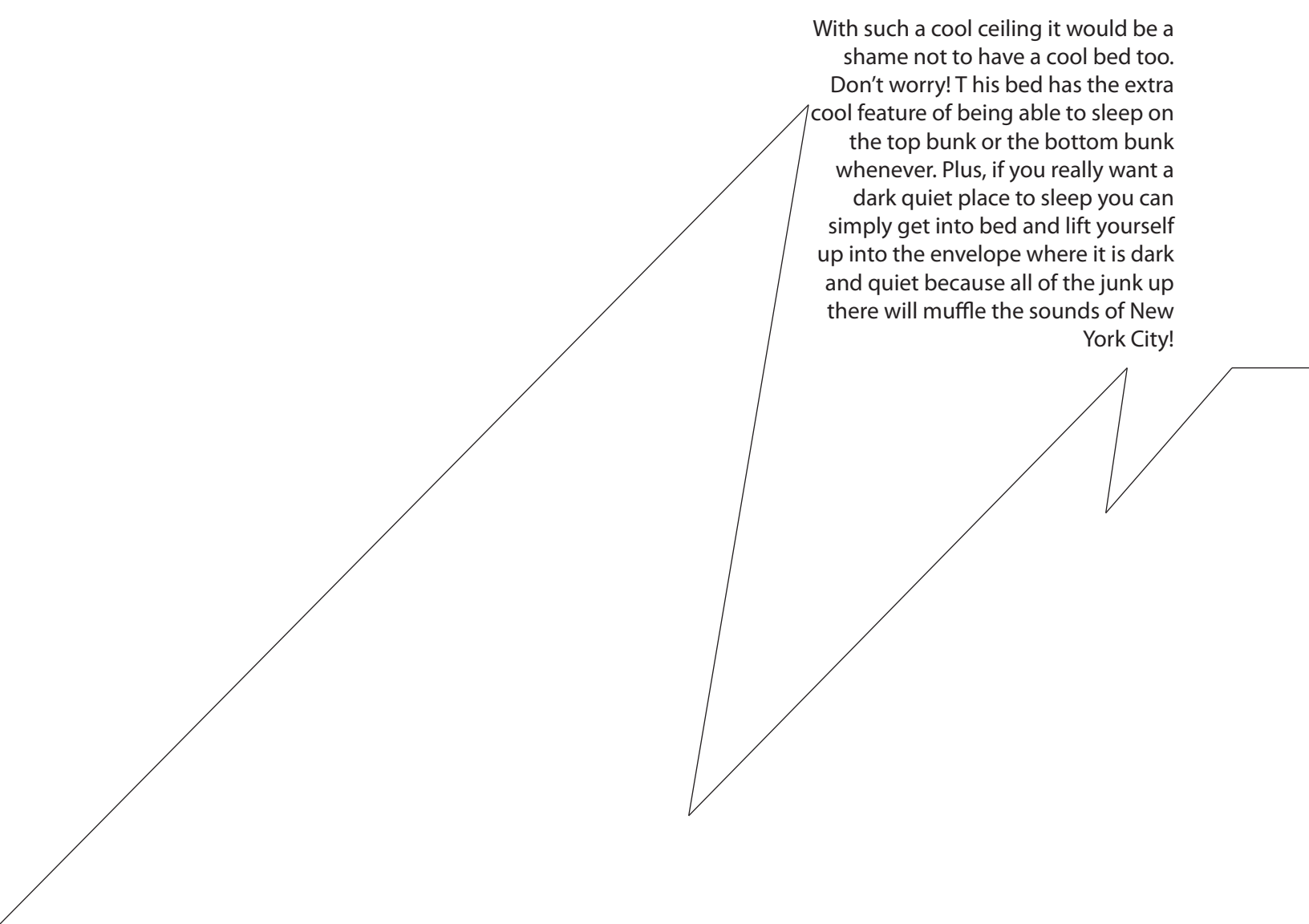


In other words, the hanging ceiling bins perform three functions for the price of one fixture. They create usable storage space, an elegant ceiling treatment, and they provide light for the loft at night. These three simple abilities create a framework for endless possibilities.

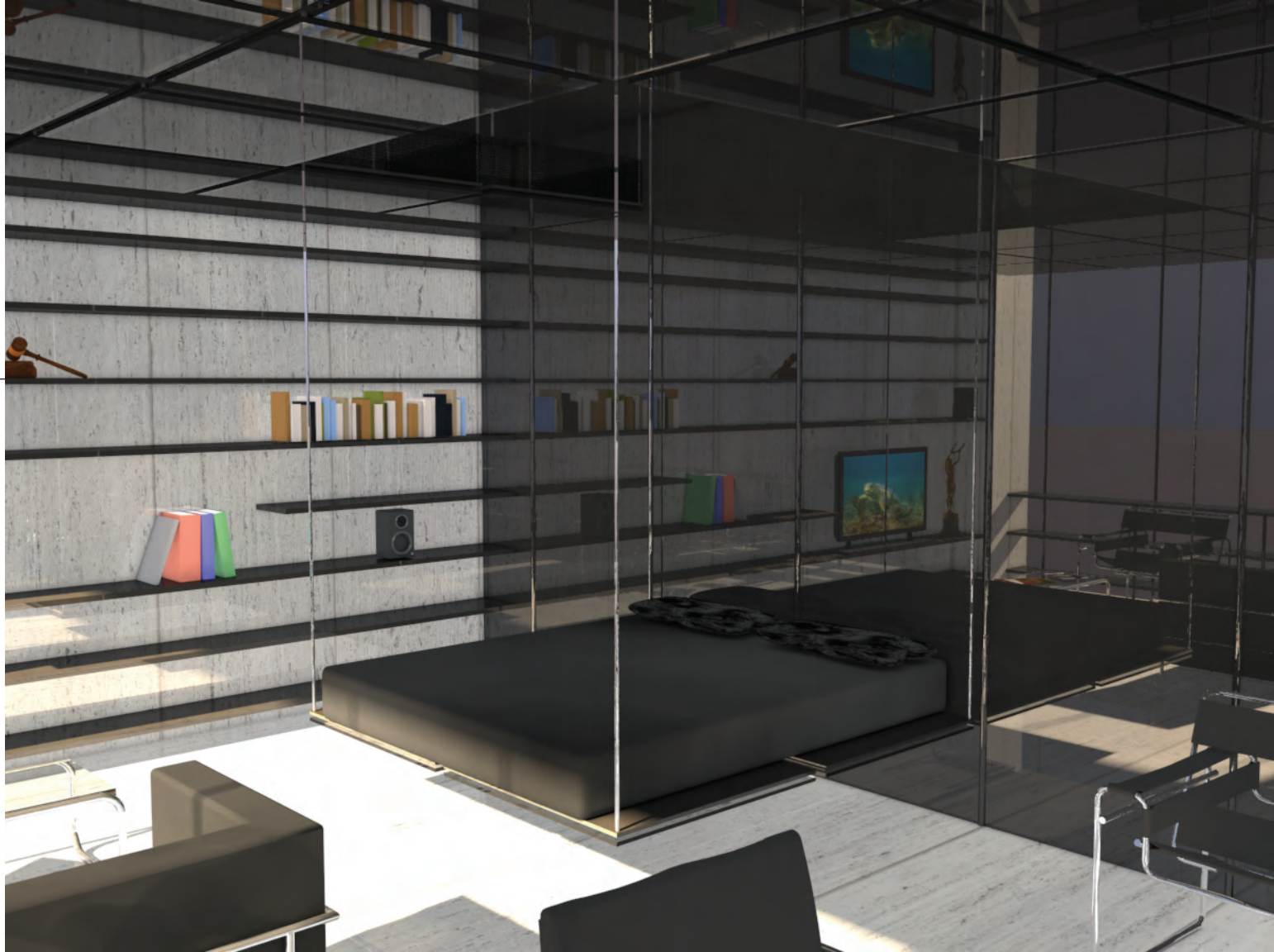


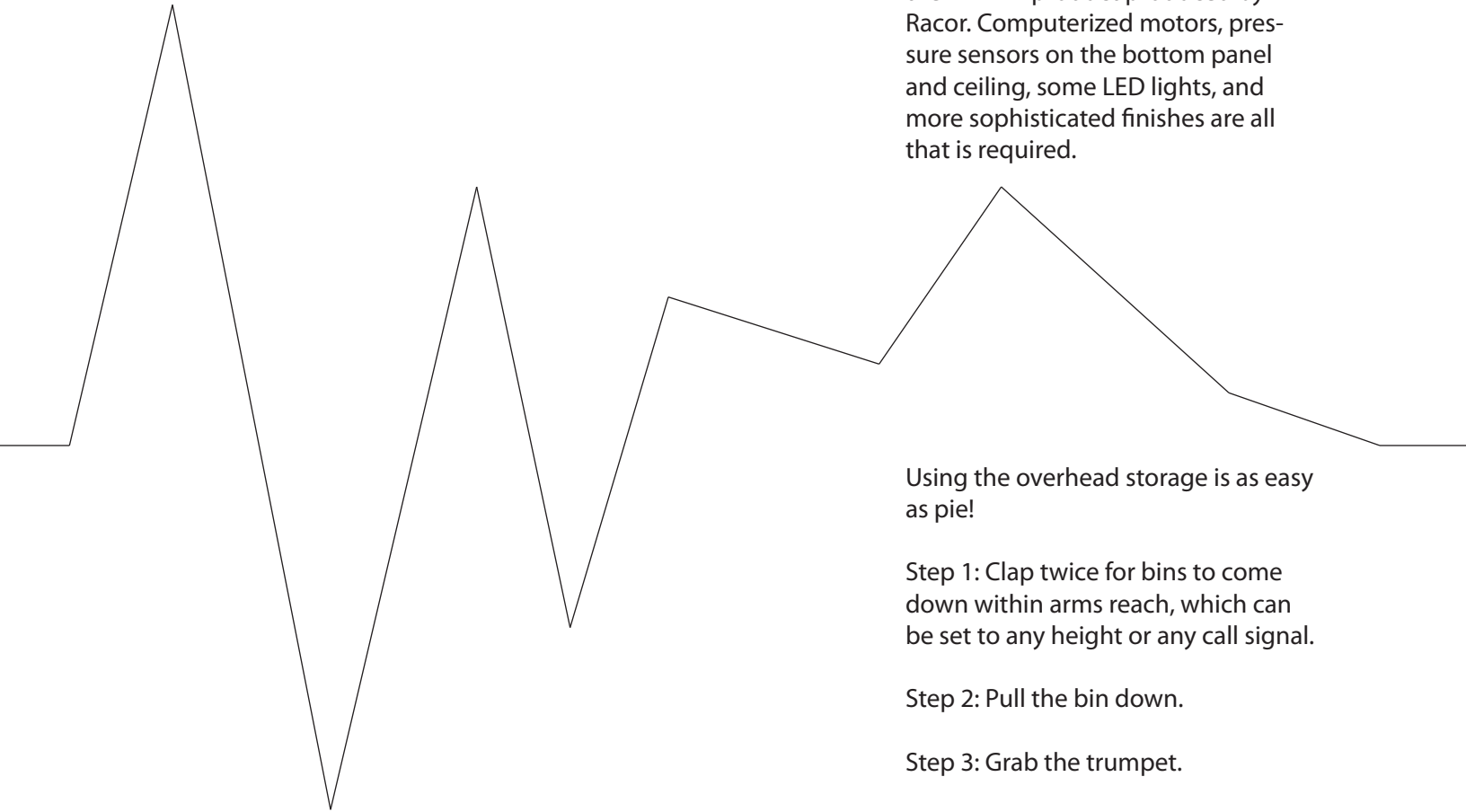
Using simple software the user can set up a tremendous variety of configurations for the ceiling and the ceiling will move itself automatically to create the desired appearance. This technique can also be used to configure the LED lights integrated into the bins as well.





With such a cool ceiling it would be a shame not to have a cool bed too. Don't worry! This bed has the extra cool feature of being able to sleep on the top bunk or the bottom bunk whenever. Plus, if you really want a dark quiet place to sleep you can simply get into bed and lift yourself up into the envelope where it is dark and quiet because all of the junk up there will muffle the sounds of New York City!





This system is simply a refinement of the PHL-1R product produced by Racor. Computerized motors, pressure sensors on the bottom panel and ceiling, some LED lights, and more sophisticated finishes are all that is required.

Using the overhead storage is as easy as pie!

Step 1: Clap twice for bins to come down within arms reach, which can be set to any height or any call signal.

Step 2: Pull the bin down.

Step 3: Grab the trumpet.

Step 4: Clap twice for the ceiling to return to its previous position.



For more projects please visit:
www.arcats.net

Thanks for your interest!
Tomas Aguilar

